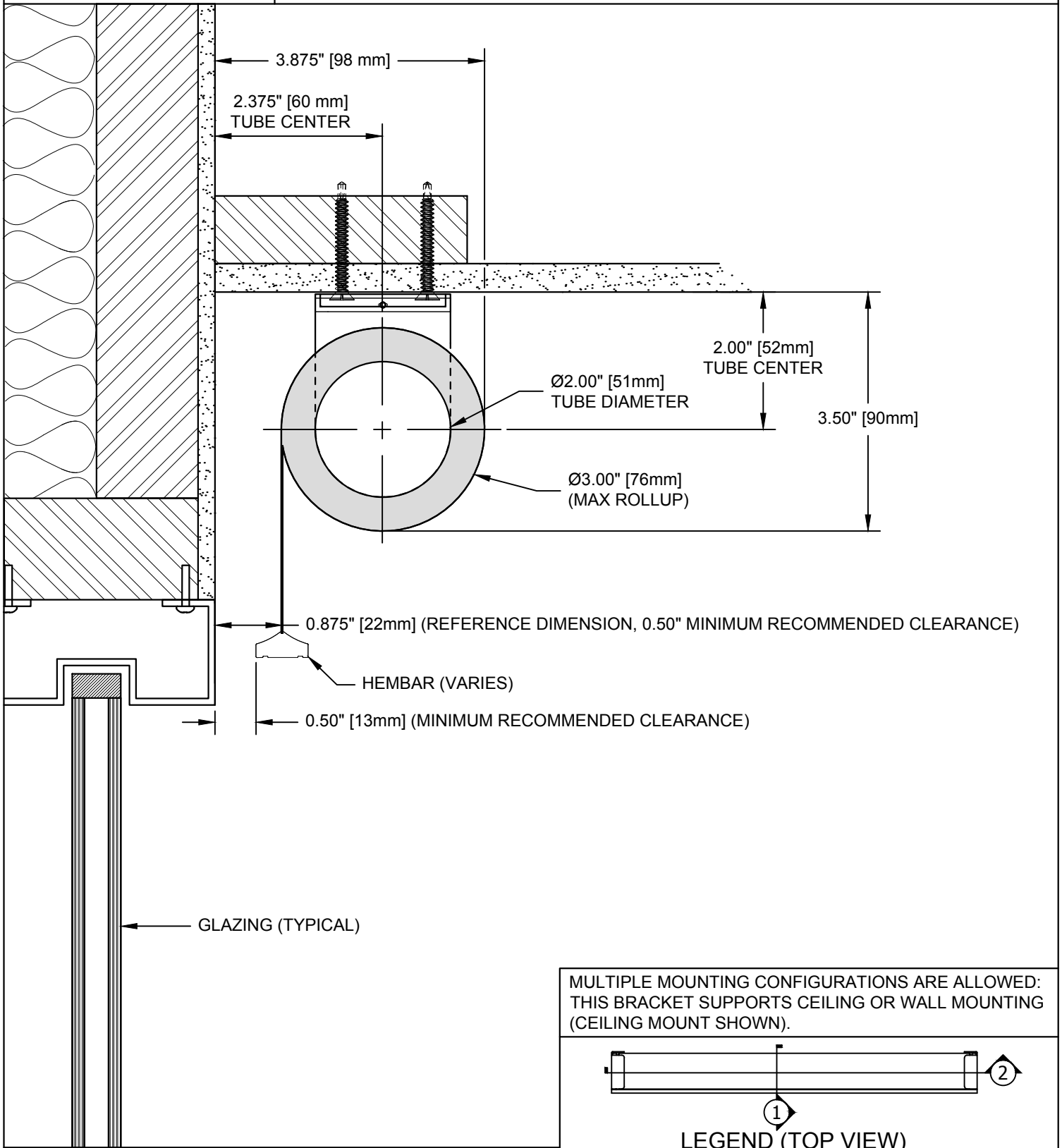


PALLADIOM SHADE

CEILING MOUNT SHADE



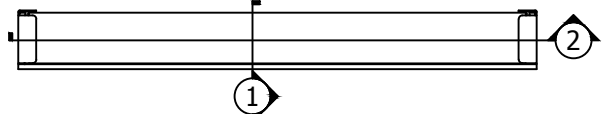
0.875" [22mm] (REFERENCE DIMENSION, 0.50" MINIMUM RECOMMENDED CLEARANCE)

HEMBAR (VARIES)

0.50" [13mm] (MINIMUM RECOMMENDED CLEARANCE)

GLAZING (TYPICAL)

MULTIPLE MOUNTING CONFIGURATIONS ARE ALLOWED: THIS BRACKET SUPPORTS CEILING OR WALL MOUNTING (CEILING MOUNT SHOWN).



LEGEND (TOP VIEW)

SHADE INSTALLED AS PROVIDED BY FACTORY WILL HAVE ALL NECESSARY CLEARANCES FOR PROPER OPERATION. IT IS THE RESPONSIBILITY OF THE MASTER TECHNICIAN TO ENSURE PROPER CLEARANCES ARE MAINTAINED AFTER INSTALLATION.

PALLADIOM SHADE

085582

SCALE: 1/2

VIEW: 1

REVISION: A